

Engineering Specification

Job Name _____

Contractor _____

Job Location _____

Approval _____

Engineer _____

Contractor's P.O. No. _____

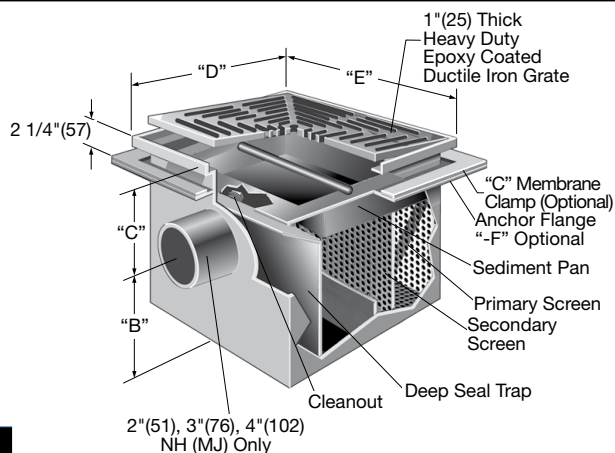
Approval _____

Representative _____

FD-440 Sediment & Oil Intercepting Drain Specification

Watts FD-440 powder epoxy coated rectangular steel sediment and oil intercepting drain with ductile iron grate, deep seal trap with cleanout, removable sediment pan, removable sediment bucket, primary and secondary screen. Unit to be complete with 2" vent connection.

Call customer service if you need assistance with technical details.

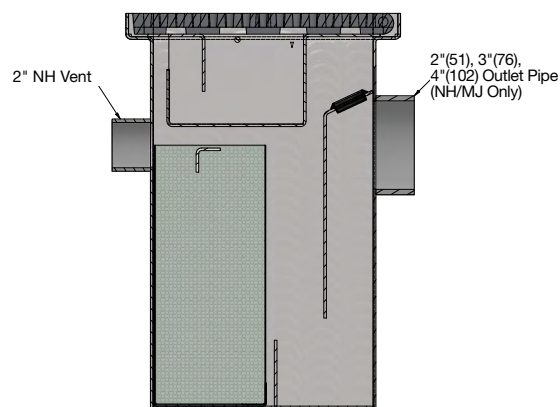


Grate Size		
Suffix	Description	
12	12 1/2"(318) Sq.	<input type="checkbox"/>
60	24 1/2"(622) x 12 1/2"(318)	<input type="checkbox"/>
100	24 1/2"(622) Sq.	<input type="checkbox"/>
200	36 1/2"(927) x 24 1/2"(622)	<input type="checkbox"/>

Options		
Suffix	Description	
-C	Membrane Clamp	<input type="checkbox"/>
-F	Anchor Flange	<input type="checkbox"/>
-X	Special "C" Dimension, per 3"(76)	<input type="checkbox"/>
-6	Vandal Proof Top	<input type="checkbox"/>
-10	Secured Top	<input type="checkbox"/>
-113M	Special Epoxy from 3M Range	<input type="checkbox"/>

Dimensional Chart

Model No.	Sludge Capacity Lbs.	Grate Free Area Sq. In.	A Outlet Size	B Base to Center	C Top to Center	D Length	E Width
FD-440-12	12	51	2"(51)	12"(305)	6"(152)	12 1/2"(318)	12 1/2"(318)
FD-440-60	60	100	3"(76)	22"(559)	6"(152)	24 1/2"(623)	12 1/2"(318)
FD-440-100	100	200	4"(102)	30"(762)	6"(152)	24 1/2"(623)	24 1/2"(623)
FD-440-200	200	300	4"(102)	30"(762)	6"(152)	36 1/2"(927)	24 1/2"(623)



NOTICE

The information contained herein is not intended to replace the full product installation and safety information available or the experience of a trained product installer. You are required to thoroughly read all installation instructions and product safety information before beginning the installation of this product.

Watts product specifications in U.S. customary units and metric are approximate and are provided for reference only. For precise measurements, please contact Watts Technical Service. Watts reserves the right to change or modify product design, construction, specifications, or materials without prior notice and without incurring any obligation to make such changes and modifications on Watts products previously or subsequently sold.



USA: T: (800) 338-2581 • Watts.com

Canada: T: (888) 208-8927 • Watts.ca

Latin America: T: (52) 55-4122-0138 • Watts.com

ES-WD-FD-440-CAN 2430

