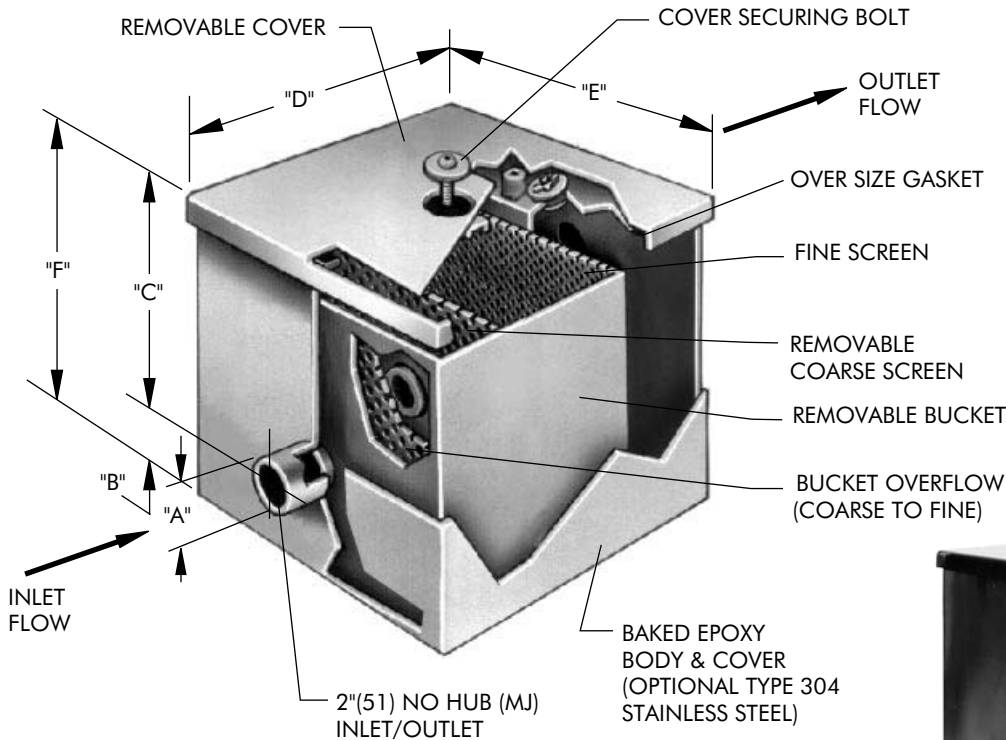


SPECIFICATION: Watts Drainage Products SI-740-M epoxy coated sediment interceptor with perforated sediment bucket, removable perforated baffle and gasketed cover secured by single securing bolt.

FUNCTION: Prevents hair, lint, plaster and sediment from entering and clogging drain lines.

NOTE: SI-740-M requires 12"(305) clearance above cover to remove sediment bucket.

Order Code: **SI-742-M-**



Ex. SI-742-M-X

Options (Select One or More)	
Suffix	Description
-SS	All Stainless Steel <input type="checkbox"/>
-T	Female Threaded Inlet & Outlet <input type="checkbox"/>
-X	Recessed Cover <input type="checkbox"/>



SI-742-M-SS
STAINLESS STEEL
(OPTIONAL)

Interceptor Catalog Number	Cover Type	A	B	C	D	E	F	Base to Center of Outlet	Top to Center of Outlet
		Inlet & Outlet	Base to Center	Top to Center	Length	Width	Height		
SI-740-M	Smooth	2" (51)	4" (102)	9" (229)	11-1/4" (286)	11-1/4" (286)	13" (330)	9" (229)	4" (102)
SI-740-M-X	Recessed	2" (51)	4" (102)	9" (229)	12-3/8" (314)	12-3/8" (314)	13" (330)	9" (229)	4" (102)

Job Name _____ Contractor _____

Job Location _____ Contractor's P.O. No. _____

Engineer _____ Representative _____

Watts Drainage reserves the right to modify or change product design or construction without prior notice and without incurring any obligation to make similar changes and modifications to products previously or subsequently sold. See your Watts Drainage representative for any clarification. Dimensions are subject to manufacturing tolerances.